



White & Case

📍 New York, USA

☰ Infinite Veneer

The options available with Infinite Veneer offered the designers endless choices to match the office décor

The project.

HOK & HYL Architecture collaborated to design global law firm White & Case's state of the art offices, located in New York.

Sprawled across the top nine floors of a tower in Midtown's Rockefeller Centre, offering scenic views of Manhattan, the new 440,000 sq. ft. office demanded a sophisticated and modern workspace for attorneys and legal professionals.

The challenge.

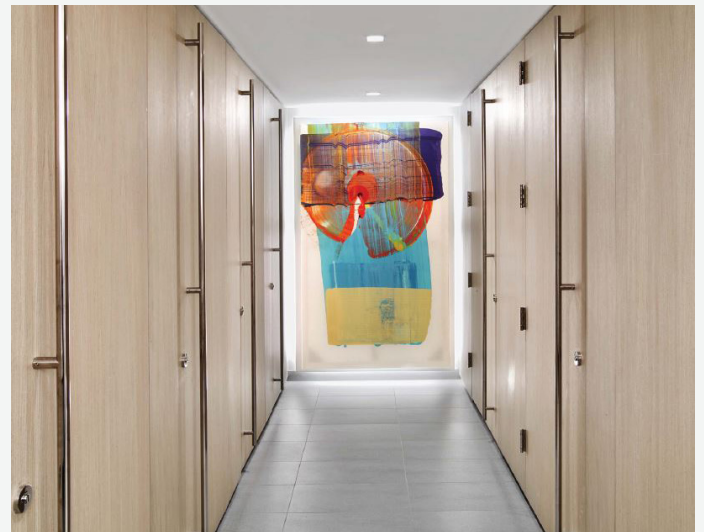
White & Case interviewed hundreds of partners and associates about their workplace needs and even toured the offices of other law firms. Their research revealed that they wanted "neither white-shoe formality nor a laidback start-up vibe, but something in the middle, a quiet kind of buzz" noted Interior Design.

Our ideas for custom enclosures had to live up to their attention to detail and commitment to wellbeing. Every inch had to be "superlatively composed and calming."

The challenge.

The options available with Infinite Veneer offered the designers endless choices to match the office decor seamlessly. Full height stalls in a beautifully stained Crown Cut Maple veneer provided rich, earthy tones to match the modern aesthetic of the workspaces.

With innovative features, including floating pilasters, adjustable satin anodised aluminum pedestals and a



unique 3-part aluminum headrail system, the full height stalls offered maximum privacy to employees with 20mm floor and ceiling clearances.

The Infinite restroom range was a great choice by the design team. Flush fronts and minimalistic fittings made for a sleek, contemporary feel which is perfect for such a stylish environment.

Infinite Veneer is part of our V3 premium range for quality craftsmanship and style-led finishes. And as no two real wood grains are the same, it just adds to the high end, luxurious feel of every individual installation.

It was a privilege to bring our international experience and technical excellence, in collaboration with a team of inspirational architects and designers, to such a pioneering global law firm.